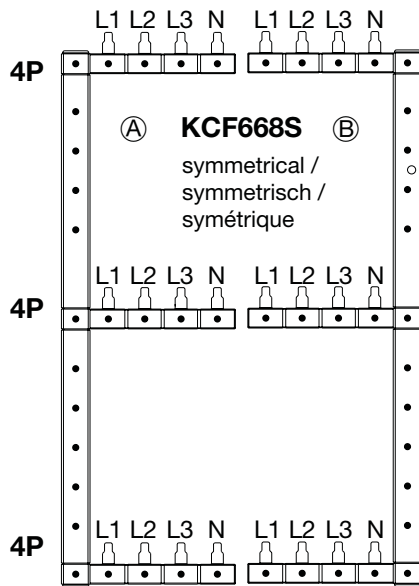
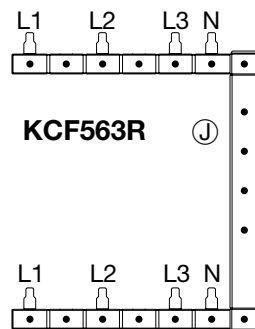
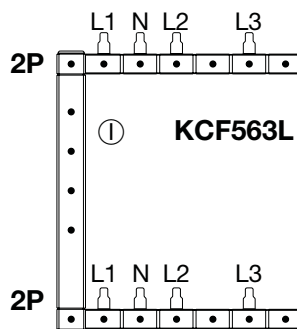
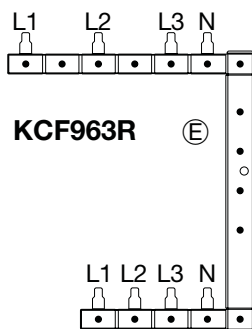
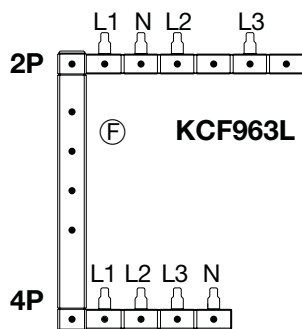
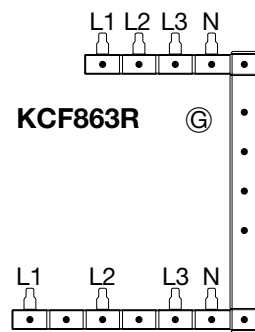
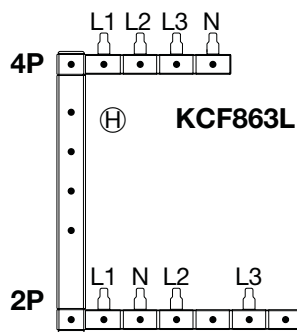
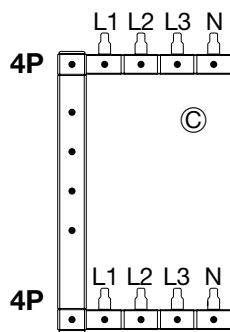


- (EN) Horizontal and vertical busbars for Quick-Connect/QuickBusbar System
- (DE) Horizontale und vertikale Phasenschielen für Quick-Connect/QuickBusbar System
- (FR) Barres horizontales et verticales pour système Quick-Connect/QuickBusbar

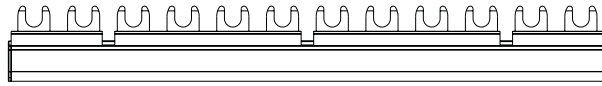
## Variants - Verticals busbars / Varianten - Vertikale Phasenschielen / Variantes - Barres verticales



- These busbars are not quick connect so you have to clamp the cages to ensure a good connection
- Die vertikalen Phasenschielen sind nicht QuickConnect (nicht steckbar). Einspeisung erfolgt via Käfigklemme, Schraube muss angezogen werden.
- Ces barres ne sont pas quick connect donc il faut serrer les cages pour s'assurer d'un bon raccordement.



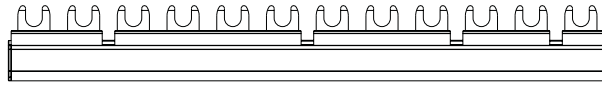
① **KDS463A**



**4P-4P-4P**  
**L1-L2-L3-N (x3)**

**12 module**  
**12 module**  
**12 modules**

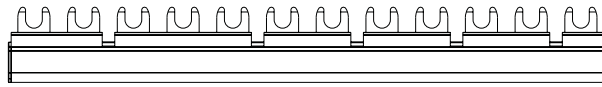
② **KDS463AS**



**4P-4P-2P-2P**  
**L1-L2-L3-N (x2) / L1-N-L2-N**

**12 module**  
**12 module**  
**12 modules**

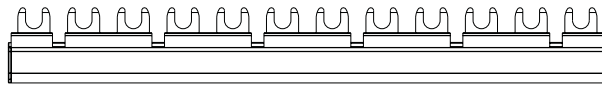
③ **KDS463AT**



**4P-2P-2P-2P-2P**  
**L1-L2-L3-N / L1-N-L2-N-L3-N-L1-N**

**12 module**  
**12 module**  
**12 modules**

④ **KDS563A**



**2P-2P-2P-2P-2P-2P**  
**L1-N-L2-N-L3-N (x2)**

**12 module**  
**12 module**  
**12 modules**

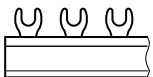
**Anschluss / Connection / Connexion**



quickconnect



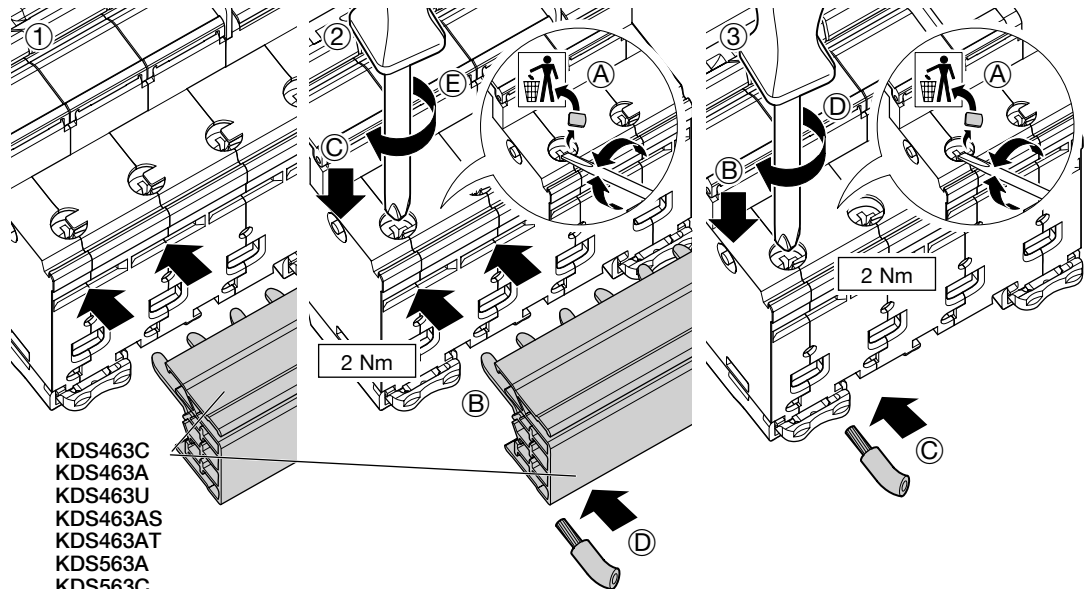
①



②



③



KDS463C  
KDS463A  
KDS463U  
KDS463AS  
KDS463AT  
KDS563A  
KDS563C  
KDS563U

## Combinations / Kombinationen / Combinaisons

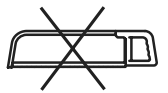
Vertical busbars / Vertikale Marchiennes / Barres verticales	Numbers of rows / Anzahl DIN-Reihen / Nombres de rangées	Type of poles / Polzahl / Types de pôles	Horizontal busbars / Horizontale Phasenschiene / Barres horizontales
A KCF668S (LEFT / LINKS / GAUCHE)	Level / Reihe / Niveau 1	4P	① KDS463A      ② KDS463AS      ③ KDS463AT
	Level / Reihe / Niveau 2		
	Level / Reihe / Niveau 3		
B KCF668S (RIGHT / RECHTS / DROITE)	Level / Reihe / Niveau 1	4P	① KDS463A
	Level / Reihe / Niveau 2		
	Level / Reihe / Niveau 3		
C KCF663S (LEFT / LINKS / GAUCHE)	Level / Reihe / Niveau 1	4P	① KDS463A      ② KDS463AS      ③ KDS463AT
	Level / Reihe / Niveau 2		
D KCF663S (RIGHT / RECHTS / DROITE)	Level / Reihe / Niveau 1	4P	① KDS463A
	Level / Reihe / Niveau 2		
E KCF963R	Level / Reihe / Niveau 1	2P	④ KDS563A
	Level / Reihe / Niveau 2	4P	① KDS463A
F KCF963L	Level / Reihe / Niveau 1	2P	④ KDS563A
	Level / Reihe / Niveau 2	4P	① KDS463A      ② KDS463AS      ③ KDS463AT
G KCF863R	Level / Reihe / Niveau 1	4P	① KDS463A
	Level / Reihe / Niveau 2	2P	④ KDS563A
H KCF863L	Level / Reihe / Niveau 1	4P	① KDS463A      ② KDS463AS      ③ KDS463AT
	Level / Reihe / Niveau 2	2P	④ KDS563A
I KCF563L	Level / Reihe / Niveau 1	2P	④ KDS563A
	Level / Reihe / Niveau 2	2P	④ KDS563A
J KCF563R	Level / Reihe / Niveau 1	2P	④ KDS563A
	Level / Reihe / Niveau 2	2P	④ KDS563A

## Technical informations / Technische Informationen / Informations techniques

By fork / Pro Gabel / Par Fourche	
Combs section / Querschnitt / Section des peignes	10 mm <sup>2</sup>
Power at the beginning or at the end of the comb / Max. Belastungsstrom am Anfang oder am Ende der Schiene / Alimentation au début ou à la fin du peigne	63 A

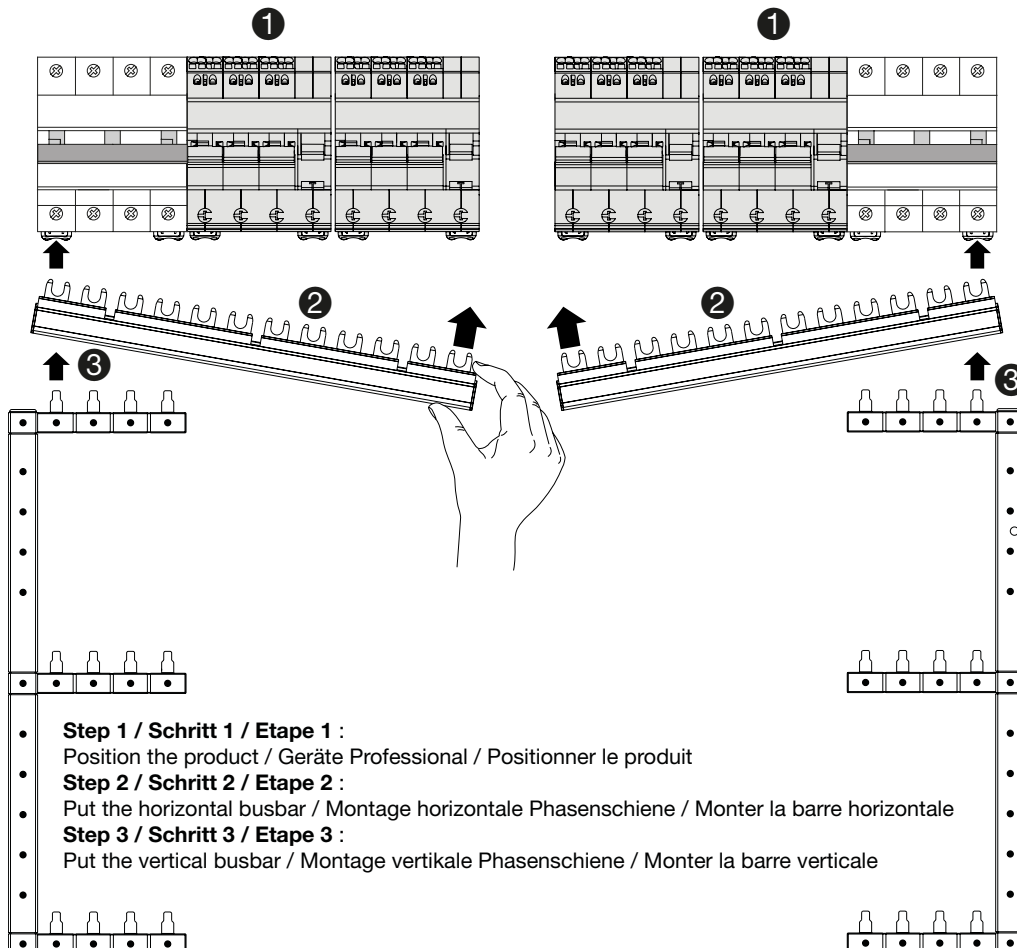
**Busbar should not be cut /  
Phasenschiene  
nichtscheidbar /  
Le jeu de barres ne doit  
pas être coupé**

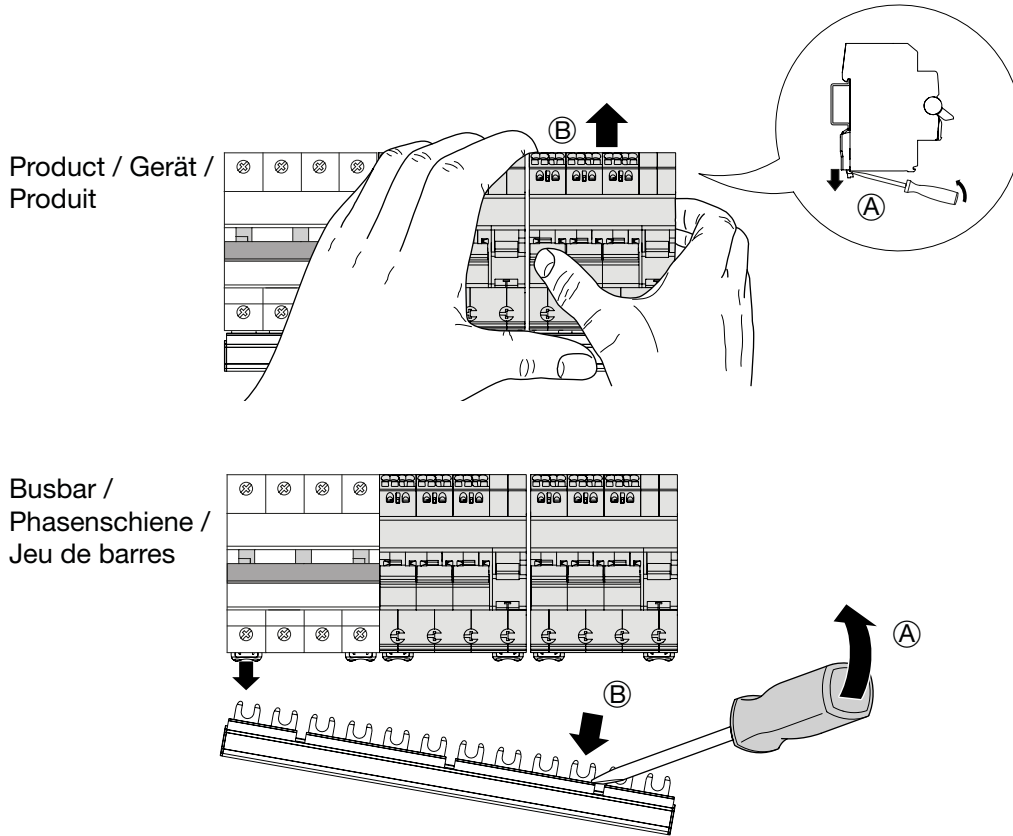
RoHS



## Installation principle / Installationsprinzip / Installation principale

### Mounting / Montage / Montage





**System 1 main connection RIGHT or LEFT / System 1 Einspeisung RECHTS oder LINKS / Système 1 branchement principal DROITE OU GAUCHE**

